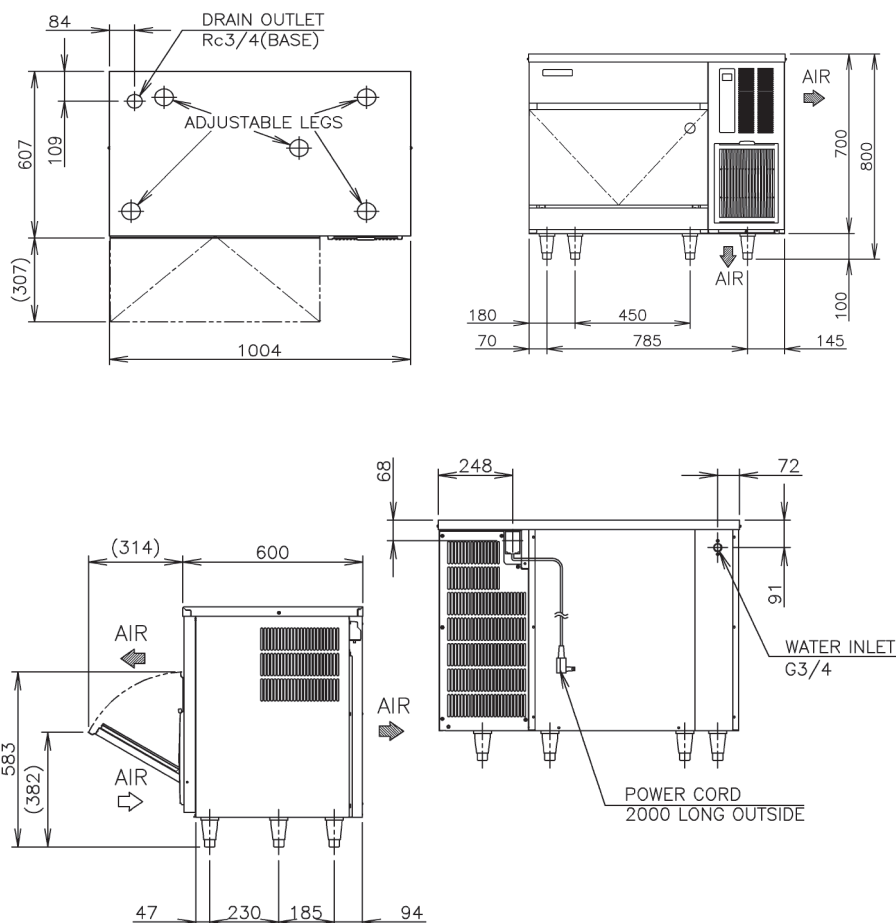




## PRODUCT FEATURES

- New intelligent control circuit dedicated to saving power and water consumption.
- Microcomputer controller controls the ice making process to work at peak performance in any conditions.
- Inbuilt safety features - freeze cycle back up timer, defrost back up, low voltage & high amp protector.
- New 7 segment operational display panel for ease of use.
- Unique closed cell water circuit for ultimate contamination protection.
- Durable stainless steel exterior.
- Easily accessible and cleanable air filters reduce costly callouts.
- Exceptionally hard crystal clear cubes that melt slowly.
- Auto rinse and flush cycle.
- 3-year parts & labour warranty on entire unit, 5 years (parts only) on compressor & air-cooled condenser coil.

## TECHNICAL DRAWING



CUBE SIZE:



Small

## PRODUCT SPECIFICATION

<b>Production Capacity per 24hours</b>	Approx. 90kg @10°C Air temp; 10°C Water Approx. 85kg @21°C Air temp; 15°C Water Approx. 62kg @32°C Air temp; 21°C Water
<b>Max Storage Capacity</b>	Approx. 38kg
<b>Freeze Cycle Time</b>	Approx. 17 Min
<b>Ice Production Per cycle</b>	Approx. 1.15kg/190pcs
<b>Dimensions</b>	1004mm (W) x 600mm (D) x 800mm (H) (Units include adjustable legs 90-125mm)
<b>Cooling</b>	Air
<b>Weight Net/Gross (kg)</b>	77 / 88
<b>AC Supply Voltage</b>	1 PHASE 220-240V 50Hz
<b>Amperage</b>	Running: 4.1A Rated: 4.1A Starting: 19A
<b>Refrigerant Charge</b>	R134a / 280g
<b>Operating Conditions</b>	Ambient Temp.: 1-40°C Water Supply Temp.: 5-35°C Water Supply Pressure: 0.07-0.8MPa (0.7-8bar) Voltage Range: Rated Voltage ±6%



Descriptions and specifications are subject to change at any time, without notice. Illustrations for demonstration purposes.

Copyright © 2019 Hoshizaki Lancer Pty Ltd. All right reserved. E&OE Date: May 2019